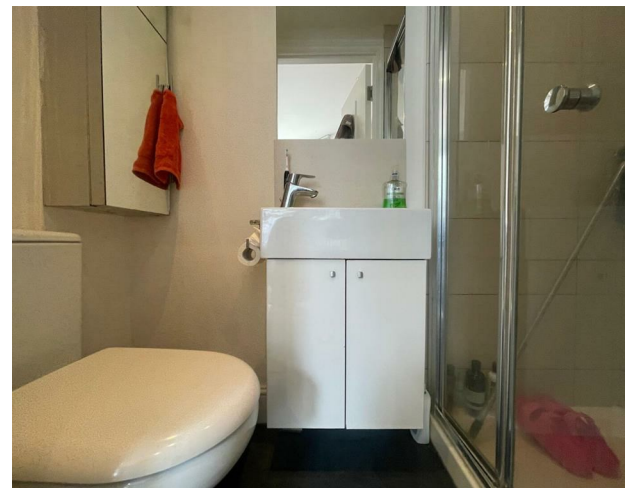


Flat 1,71 Wilberforce Road, Finsbury Park, London, N4

2SP

£1,350 Per month

am
alexmarks.co.uk



Flat 1,71 Wilberforce Road, Finsbury Park, London, N4 2SP

£1,350 Per month

Council Tax Band: A

****INC HEATING & WATER**** We are pleased to offer this stunning self-contained studio apartment located on Wilberforce Road, which gives easy access to Finsbury Park, Highbury & Clissold Park. This studio is set on the ground floor of a lovely Victorian house and offers a stunning studio room with high ceilings and large bay window that floods the studio full of natural light. There is a small but functional open plan kitchen and modern shower room. In addition, the house has a communal garden area and separate utility room with washing machines that are run by using £1 coins.

448 Hornsey Road

London

N19 4EE

02070787950

alex@alexmarks.co.uk

www.alexmarks.co.uk

